

# KAUNAS REGION

Home to advanced engineering and  
breakthrough technologies

YOUR BUSINESS LOCATION IN LITHUANIA

“  
With the biggest technological  
university in the Baltic States  
Kaunas can rightly be called  
the industrial capital of  
Lithuania. What impresses  
us most is the quality of our  
technical specialists here  
in Lithuania. Their drive and  
dedication to their work  
greatly enhances productivity  
in our operations here.”

*Mindaugas Šeštokas*  
Managing Director, Kitron UAB



 Invest  
Lithuania

[investlithuania.com](http://investlithuania.com)

## KEY POINTS

# 1

The city's technical university, is the largest provider of qualified engineers in the country. With its strong ties to business, and long experience of servicing the region's largest players, KTU is an essential resource for companies operating in the area.

# 2

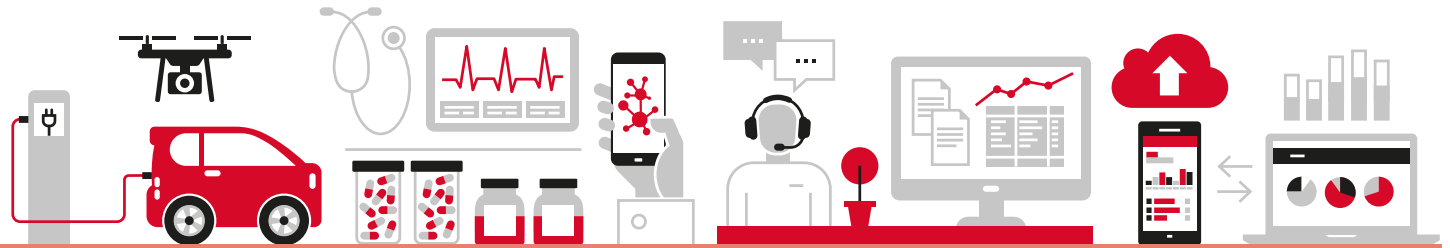
Kaunas offers perfect logistic access by road, rail and air. Kaunas Airport is also the largest cargo airport in the country. Kaunas FEZ, a hub of logistics and advanced manufacturing, is conveniently connected to the airport.

# 3

As a producer of top talent in the fields of the humanities, the social sciences and IT, Kaunas is the ideal destination for SSC development. Internationally acknowledged as CEE's "Emerging city of the year", Kaunas holds great untapped potential for growth.

# 4

Joint interdisciplinary R&D conducted by Kaunas based health specialists and engineers has helped Kaunas become a hub for companies and startups in the fields of healthcare, medical technology, and medical devices.



## INDUSTRIAL COMPETENCES

### ADVANCED ELECTRIC AND MECHANIC ENGINEERING

Automotive components, electric vehicles, charging points and parts, computer vision systems, electronic components and industry automation solutions.

### MEDTECH AND LIFE SCIENCES

Pharmaceuticals, medical devices, clinical trials management, healthcare software, embedded software, imaging software, needed research and other.

### SHARED SERVICES

Fully self sustained IT processes, F&A, HR, medical coding, analytics, customer services and other support functions.

### IT

Cloud-powered solutions, mobile development, UI and UX design, e-commerce solutions, web development platform, software solutions for engineering, F&A software and IT security solutions.

## LABOUR POOL



**293 800**

Labour pool



**19%**

Employees in manufacturing



**6,5%**

Unemployed



**€ 800**

Region average salary

**16** Vocational schools

**6** Colleges

**8** Universities



**54 335** Number of students

### THE MAIN FIELDS OF STUDY

**16%** Other

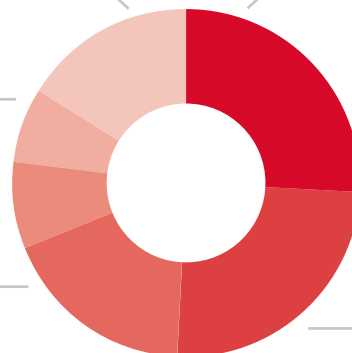
**7%** Agriculture and Veterinary

**8%** Services

**18%** Health and Welfare

**26%** Social sciences, Business and Law

**25%** Engineering, Manufacturing and Construction



## INFRASTRUCTURE



**Kaunas Airport and Airpark**  
Immediate access



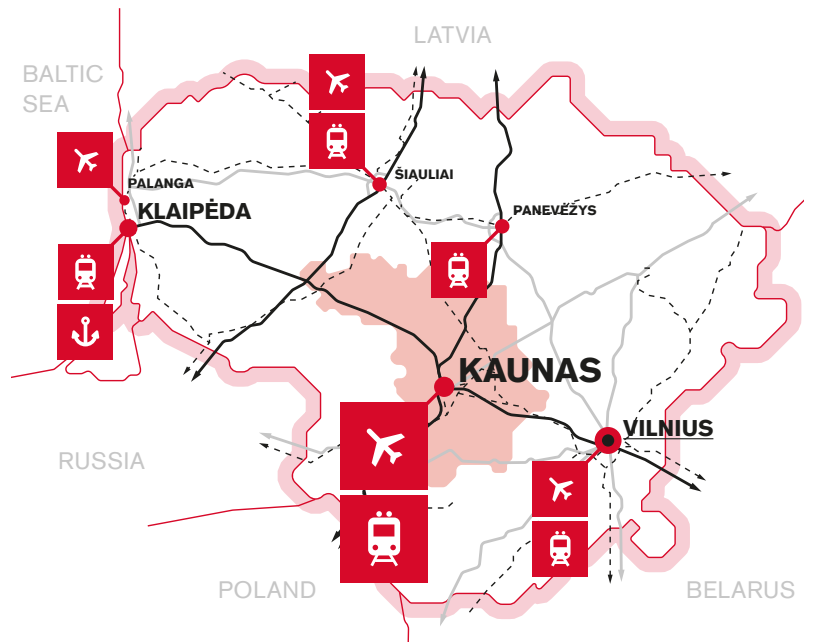
**Vilnius International Airport**  
100 km



**Klaipėda State Seaport**  
228 km



**Kruonis Technology Park**  
44 km



### SPECIAL ECONOMIC ZONES

**Kaunas Free Economic Zone**  
[www.ftz.lt](http://www.ftz.lt)

#### Already here:

Aconitum, ALG Logistika, DPD Lietuva, Elinta, Finnfoam, Fortum Heat Lietuva, Hellmann Worldwide Logistics, Hidrobalt, HITECH, Itella Logistics, Kamè, KOPA, Light technology, Littec, Peraltis, Pienas LT, RUN Engineering, Vičiūnai Group

**Kėdainiai Free Economic Zone**  
[www.kedfez.com](http://www.kedfez.com)



### SCIENCE & TECHNOLOGY PARKS

#### Santaka Valley

R&D centre for sustainable chemistry and biopharmacy, future energy, mechatronics, information and communication technologies.

#### Nemunas Valley

R&D centre for agrobiotechnology, bioenergy and forestry, food technology, safety and health

#### Kaunas University of Technology (KTU)

KTU Start Up Space, KTU Bloomberg Financial Markets Laboratory

#### The Hospital of Lithuanian University of Health Sciences

#### Kaunas Science and Technology Park

## MACROECONOMICS

### GDP

**19,8%**  
Share

**24%**  
GDP growth 2010-2015

### EXPORT

**40%**

Share of export of Lithuanian origin production

#### Top export countries:

Germany, Sweden, United Kingdom, Poland, Denmark.

### FDI IN THE REGION (2010-2015)

**1508m**  
FDI stock growth, €

**28%**  
FDI growth

#### Top 5 investors by country

Germany, Switzerland, the Netherlands, Finland, Sweden.

#### Top FDI industries (2015):

##### Manufacturing

**36%**

##### Wholesale & Retail

**17%**

##### Real Estate Operations

**15%**

##### R&D

**10%**

##### Other

**17%**

## TOP COMPANIES BY SECTOR

### ADVANCED ELECTRIC AND MECHANIC ENGINEERING



### FOOD AND BEVERAGES



### SHARED SERVICES



### IT



## OTHER LEADING COMPANIES IN THE REGION



### CONTACT US:



**Živilė Kazlauskaitė**  
**Head of Regional Development Team**  
**T:** +370 5 204 7816  
**E:** zivile.kazlauskaite@investlithuania.com

[www.investlithuania.com](http://www.investlithuania.com)



We are a government agency that provides free investment advice, contacts and data. Let's talk if you need someone to:

**INFORM** you on business costs, labour, tax & legal settings and other business areas.

**CONNECT** you to partners and organise your business meetings in Lithuania.

**FACILITATE** the set up and launch of your company, as well as help you access governmental support.

**SUPPORT** your investment by lobbying for more business friendly laws and assisting in one-off problems.